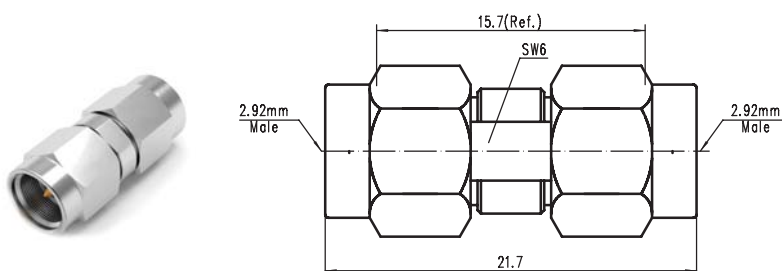


2.92mm Inter Series Adaptor

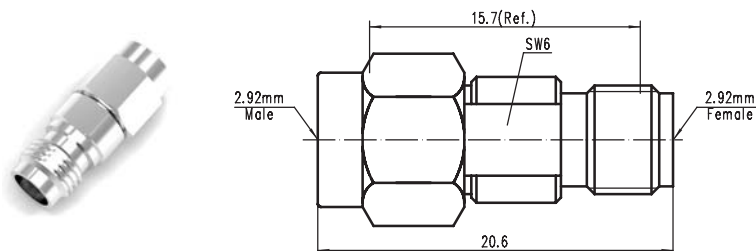
Main Specification		Material/Finishes	
Impeadance	50Ω	Body	SUS303 / Passivated
Frequency	DC ~ 40GHz	Inner Contact	CuBe / Gold Plated
Durability	≥500 Cycles	Isulator	PEI
Operating Temp.	-60°C ~ +165°C		



CODE: 100004

TYPE: 2.92mm - JYG

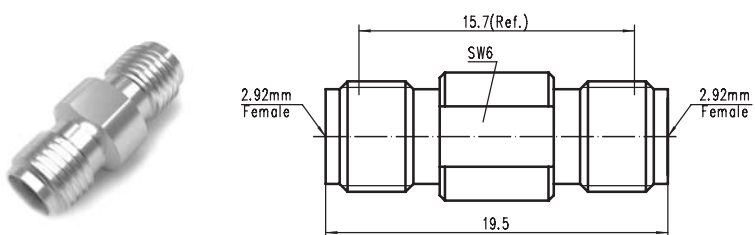
VSWR: DC - 40GHz...1.15 : 1(max)



CODE: 100005

TYPE: 2.92mm - JKG

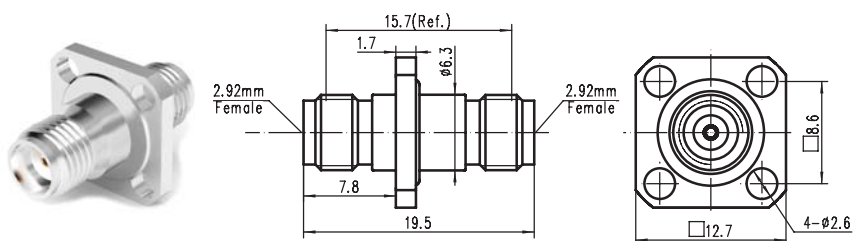
VSWR: DC - 40GHz...1.15 : 1(max)



CODE: 100006

TYPE: 2.92mm - KKG

VSWR: DC - 40GHz...1.20 : 1(max)



CODE: 100064

TYPE: 2.92mm - KFKG

VSWR: DC - 40GHz...1.20 : 1(max)